

**WORKSHOP ON COMPUSTAT/RESEARCH INSIGHT
DATABASE FOR BEGINNERS
Dr. Elango**

Authors Note: Any feedback is appreciated. Send comments to elango@ilstu.edu. Thanks.

The following exercises will enable you to learn the following:

1. Finding data on a single company
2. Finding data on several variables for a sample of companies
3. Finding time series data on several variables for a sample of companies.

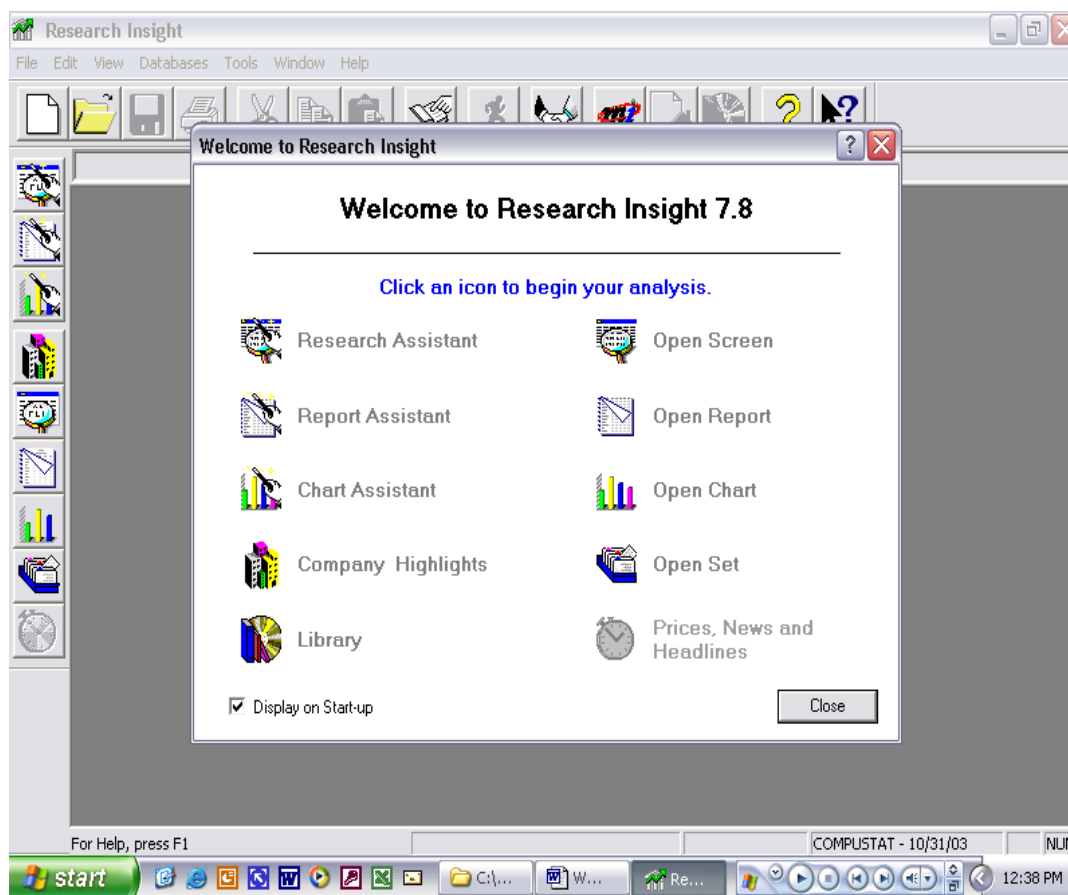
Exercise 1: Finding data on a single company



Research Insight.Lnk

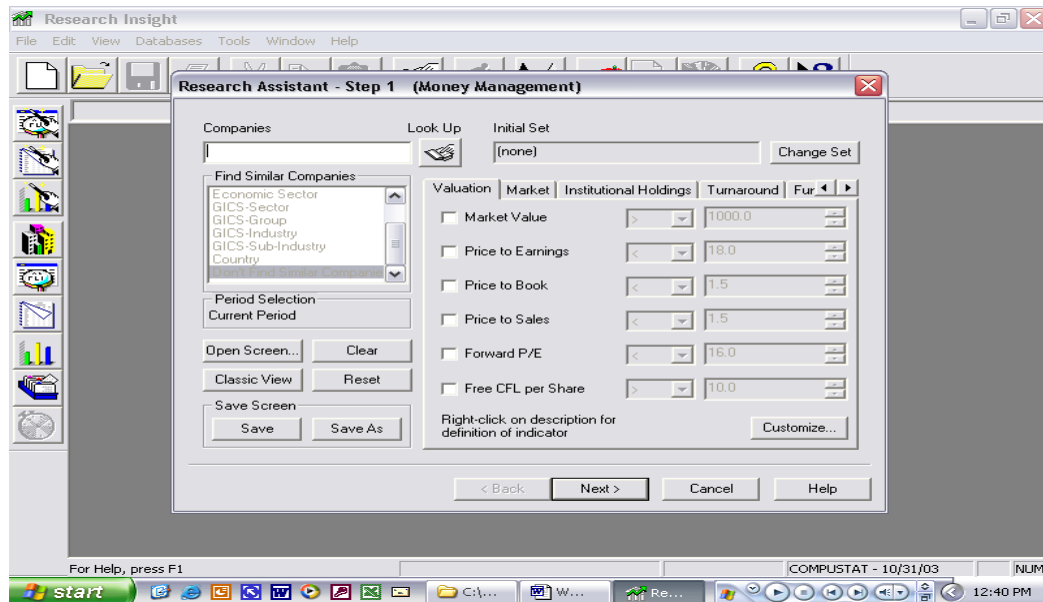
Open the Research Insight Program by **clicking** the Icon on your desktop or by locating the same in the **Start/Program** menu.

1. The following screen will appear. Click **Research Assistant**.

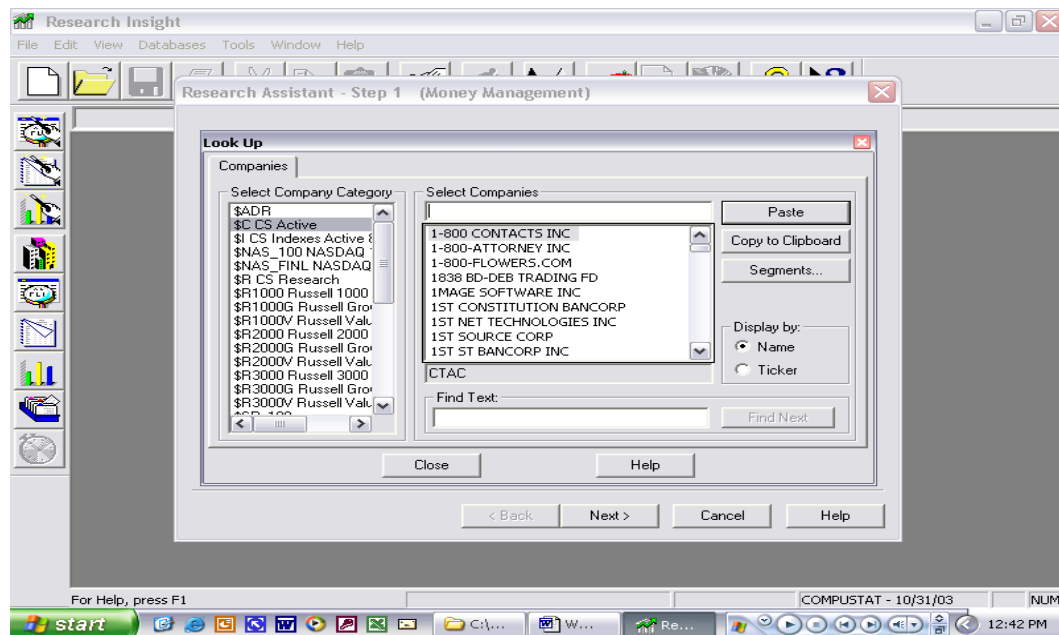


Copyright © B. Elango 2008. Please do not reproduce without permission.

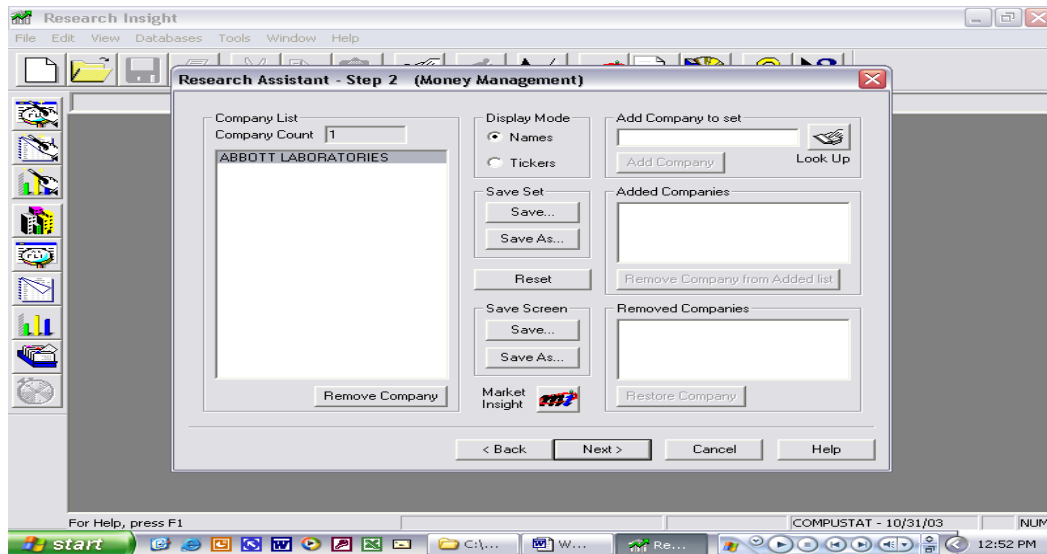
2. The following screen will appear. Click Look Up.



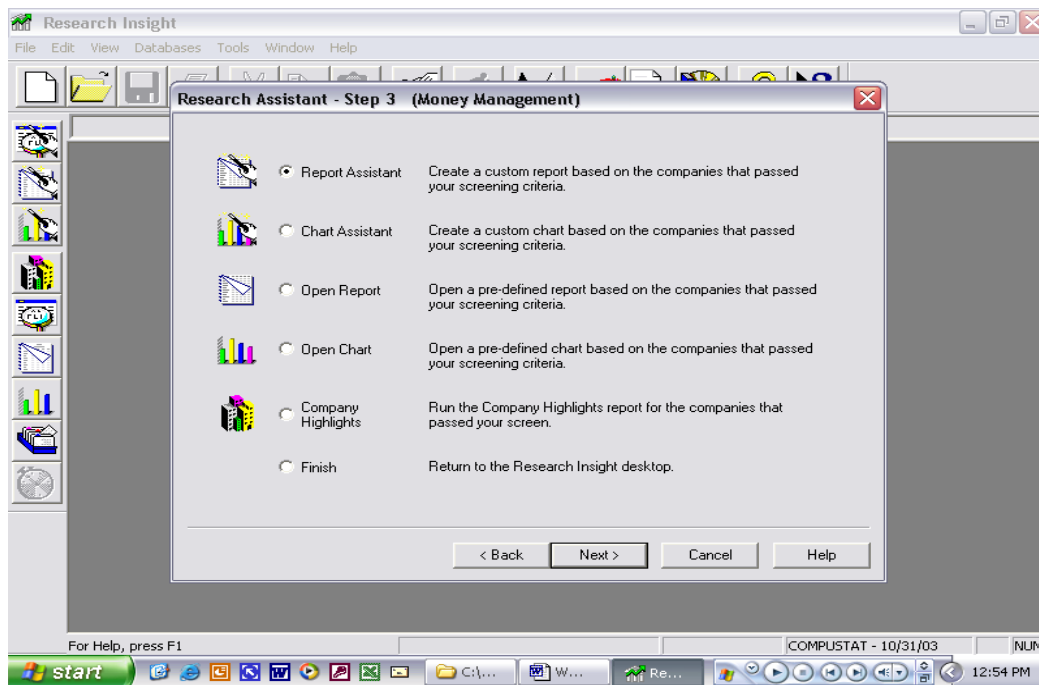
3. The following screen will appear. [Let's assume I am looking for a particular S&P 500 company, but not quite sure which one]. Click on \$SP_500 on **Select Company Category** box. *Note: you will have to scroll to the bottom of the window/sub-screen to see the available choices.* You will get a listing of all S&P 500 companies in the **Select Companies** box. [You can choose any company, but I am choosing **Abbott Laboratories**]. Next click on the Paste button. Next click the Close button at the bottom of the current window. Now click Next> button on the bottom of the remaining window.



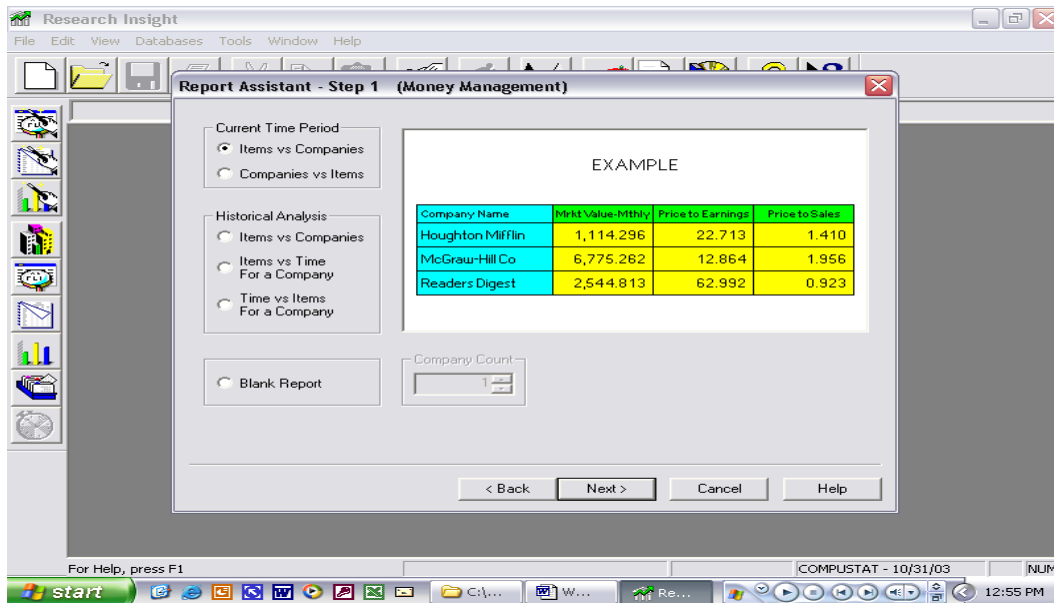
4. The following screen will appear with the company you have chosen. Click **Next>** button on the bottom of the window.



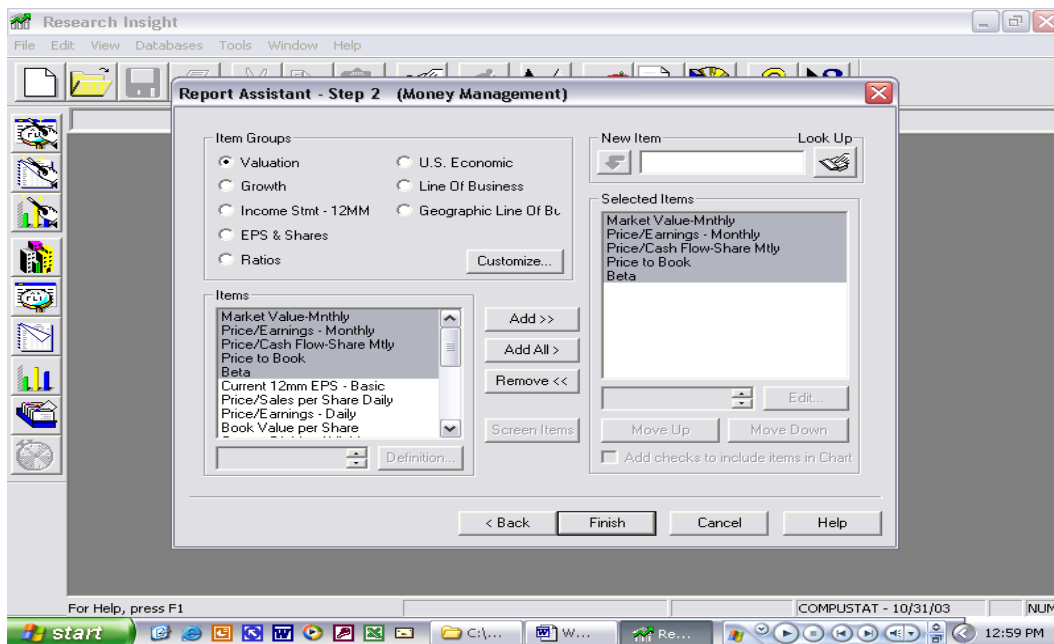
5. The following screen will appear. Choose **Report Assistant** and Click **Next>** button on the bottom of the window.



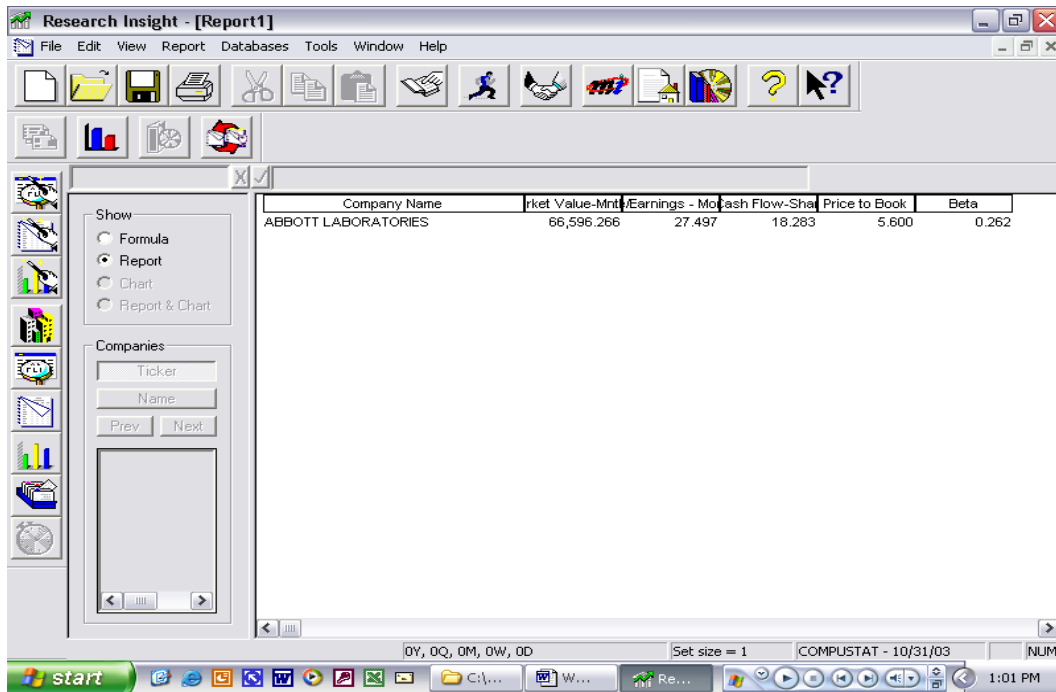
6. The following screen will appear. Choose **Items vs. Companies (Current Time Period)** and Click **Next>** button on the bottom of the window.



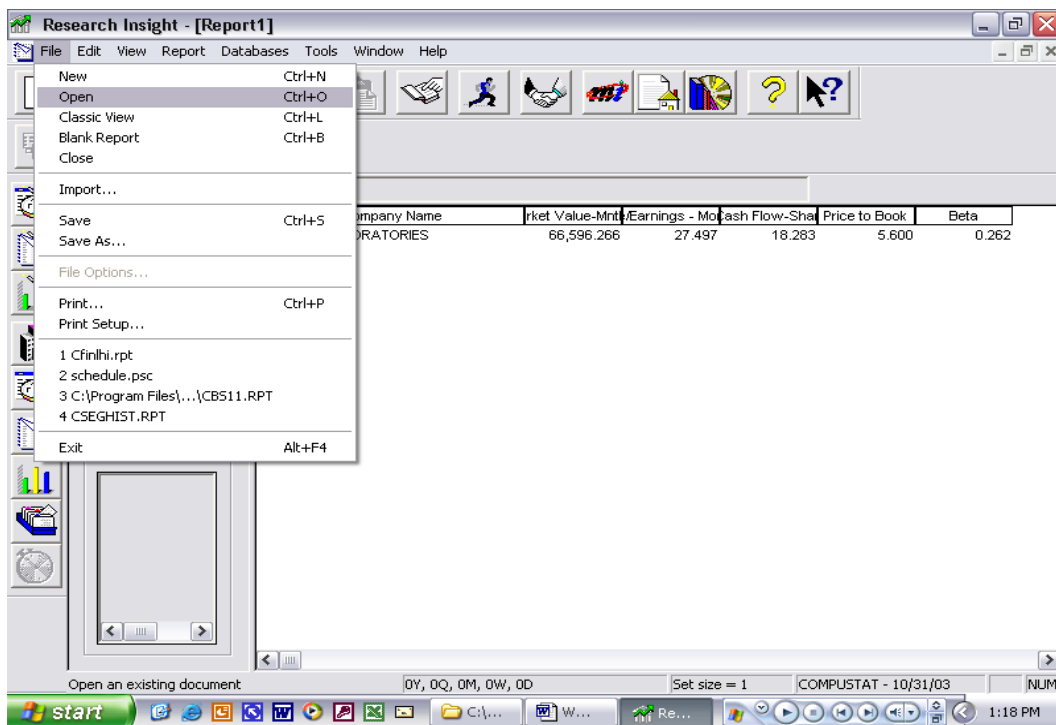
7. The following screen will appear. Choose one of the **Item Groups** and add as many **Items** you want by using the add button [In this example I have chosen valuation and have added the first 5 items]. *Note: you will have to scroll to the bottom of the window/sub-screen to see the available choices.* Click **Finish** button on the bottom of the window.



8. The following screen will appear with the company information you have chosen {if a window pops up before the data just **Click Close** button on the bottom of the window}.



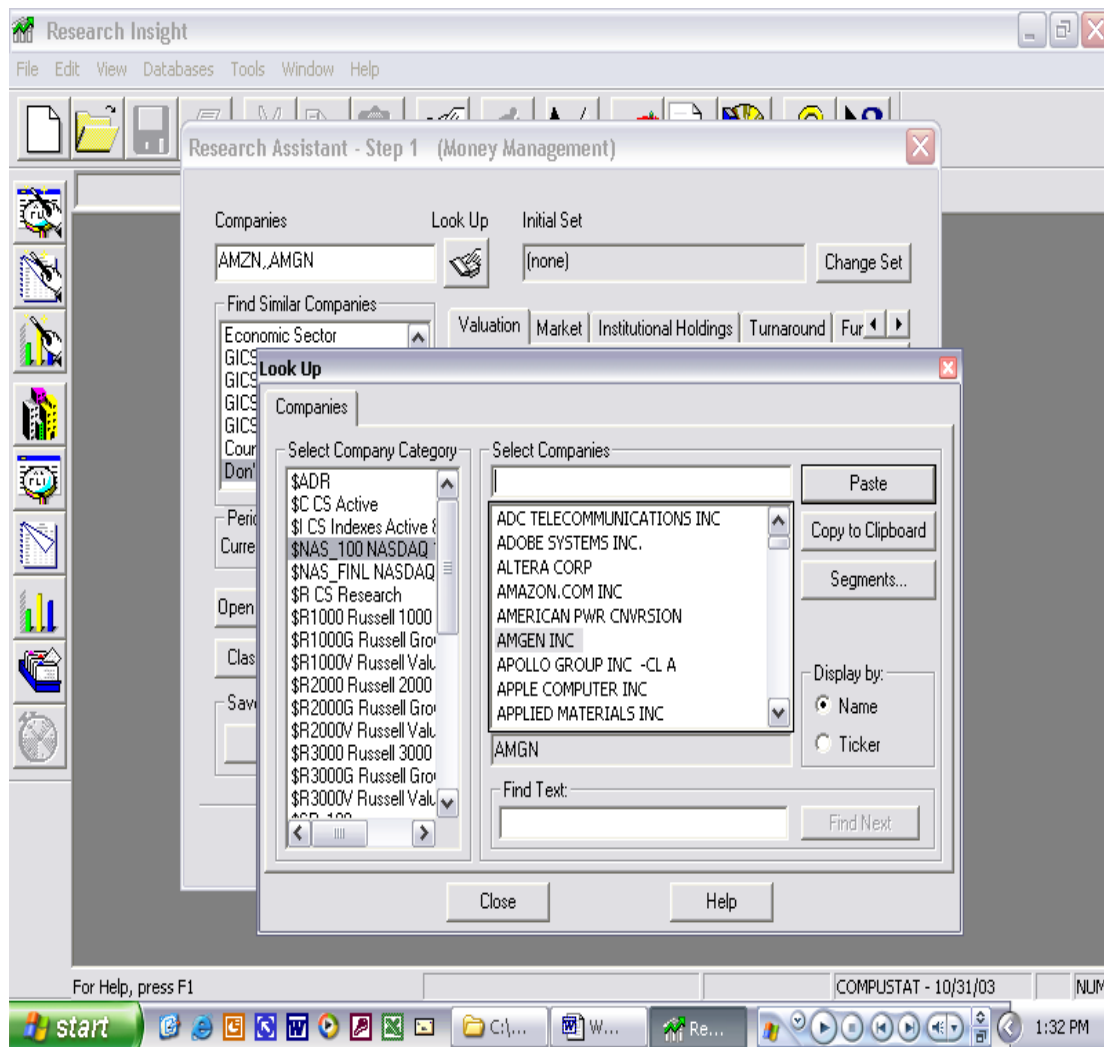
9. Go the **File** at the top of the screen and you can either **Print** the data or **Save** the data (you can Save in text form and Import it into Excel).



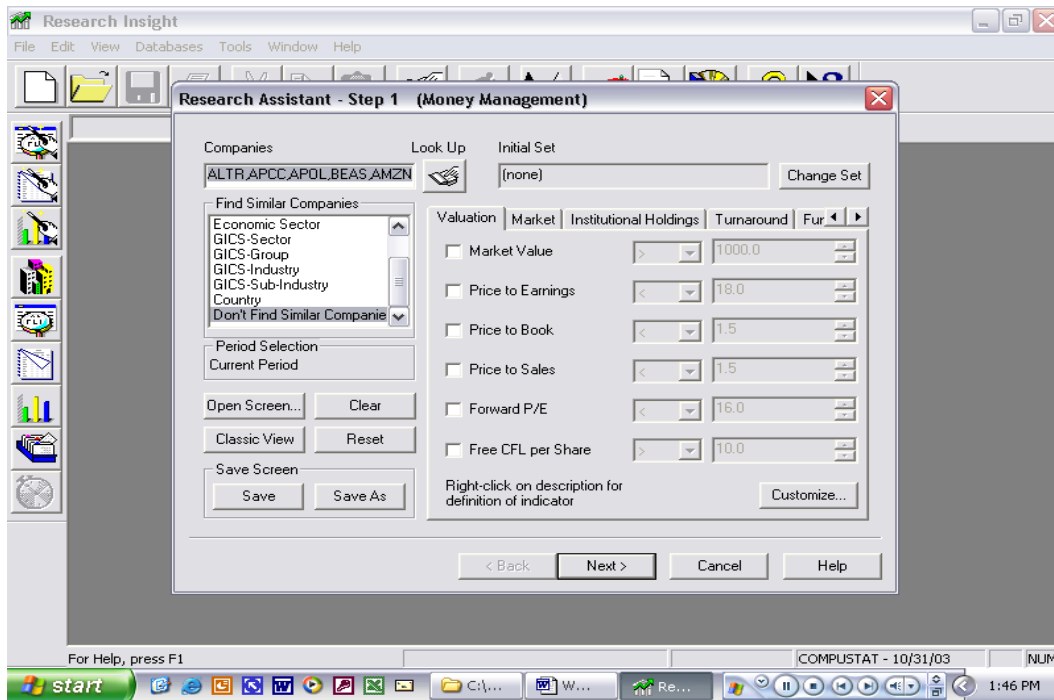
Exercise 2: Finding data for several variables for a sample of companies

This time let's assume I am interested in getting data for the 10 firms from the list of top 100 NASDAQ firms.

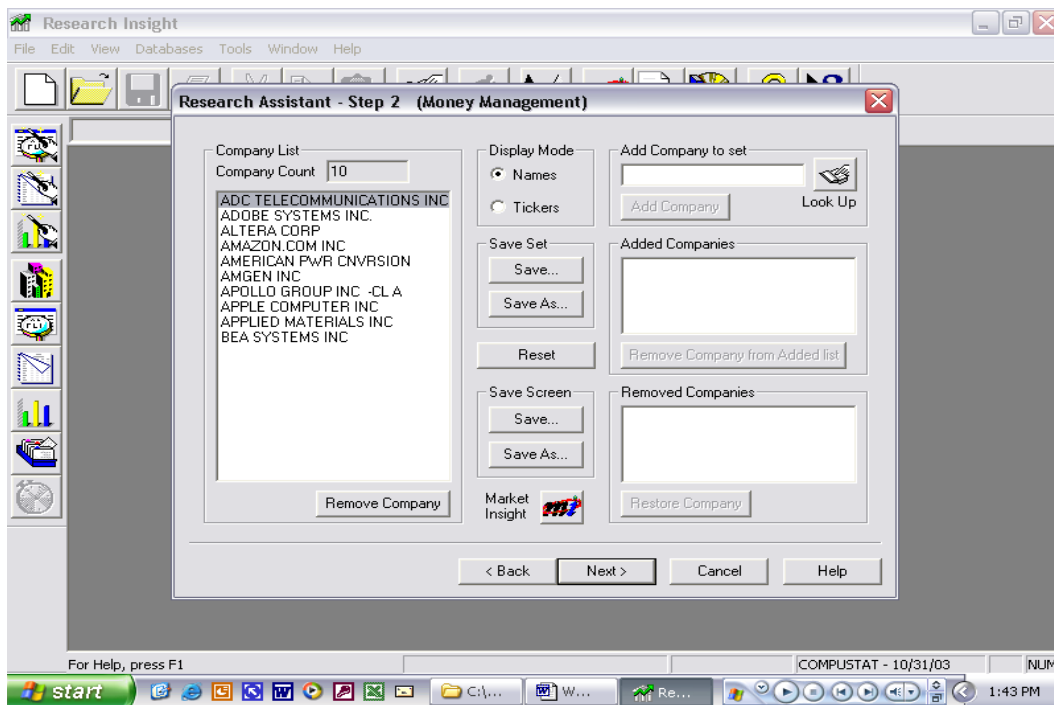
1. Repeat Step 1 (as we did in Exercise 1).
2. Repeat Step 2 (as we did in Exercise 1).
3. Click on **\$NAS_100 NASDAQ 100** on **Select Company Category** box. You will get a listing of the top 100 NASDAQ companies in the **Select Company** box. You can choose any of the ten companies you are interested in, by choosing/highlighting the company and clicking the **Paste** button (alternatively, you can accomplish the same by double clicking the company you are interested). The following screen shows that I have added two companies to my choices (Amazon and Amgen). After you are done adding the 10 companies, click the **Close** button at the bottom of the current window. Now click **Next>** button on the bottom of the remaining window screen.



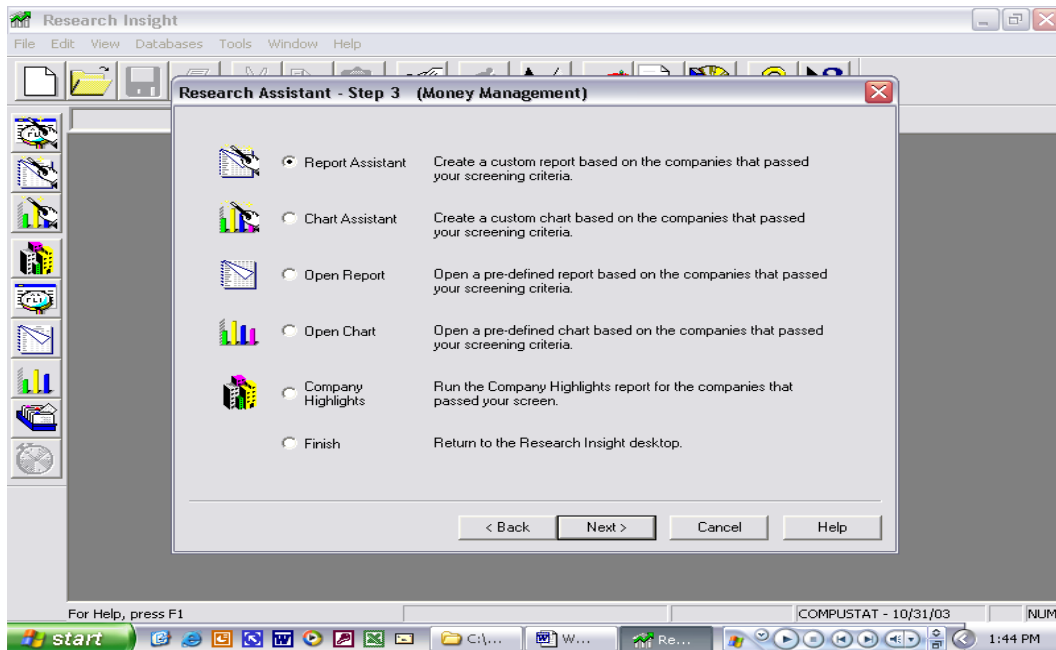
4. The following screen will appear with the ticker names of the companies you have chosen. Click **Next>** button on the bottom of the window.



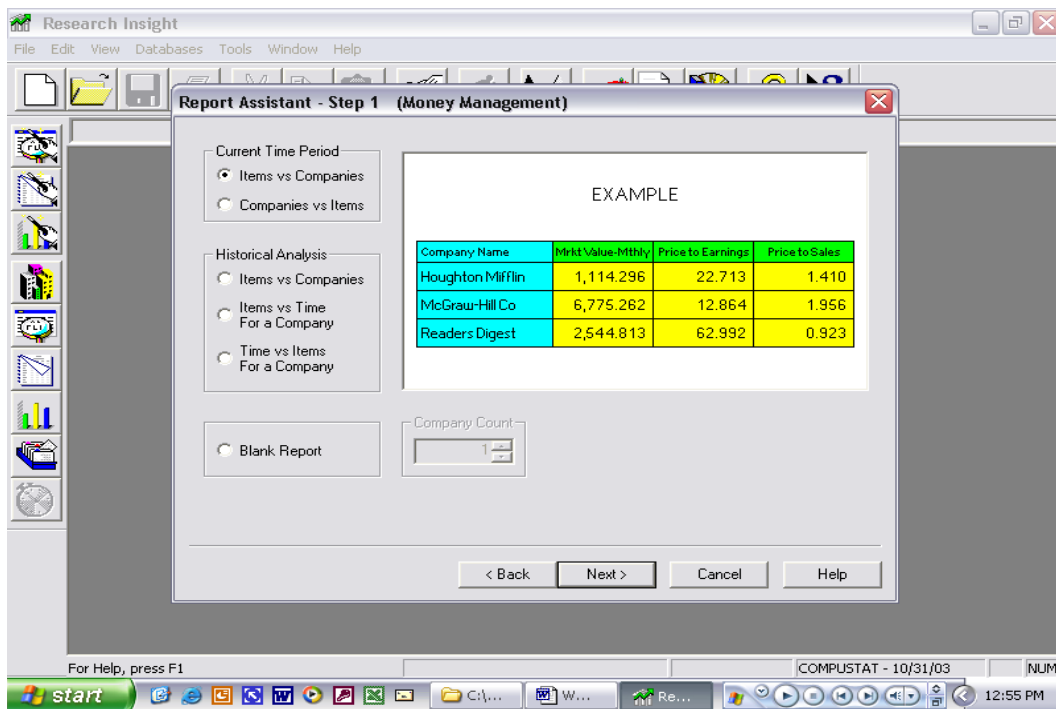
5. The following screen will appear with the names of the companies you have chosen. Click **Next>** button on the bottom of the window.



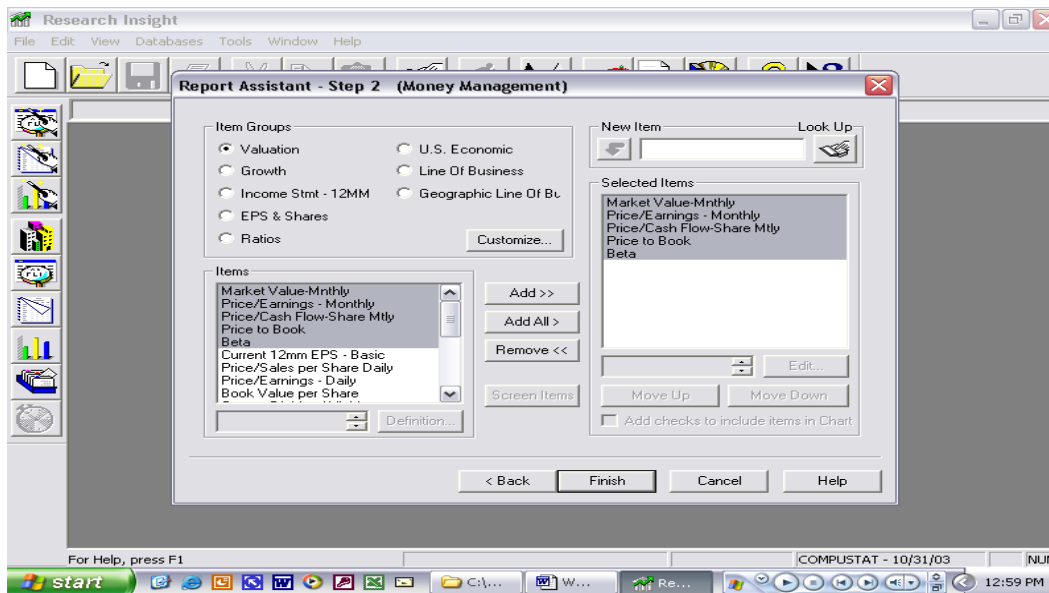
6. The following screen will appear. Choose **Report Assistant** and Click **Next>** button on the bottom of the window.



7. The following screen will appear. Choose **Items vs. Companies (Current Time Period)** and Click **Next>** button on the bottom of the window.



8. The following screen will appear. Choose one of the **Item Groups** and add as many **Items** you want by using the add button [In this example I have chosen valuation and have added the first 5 items]. Click **Finish** button on the bottom of the window.



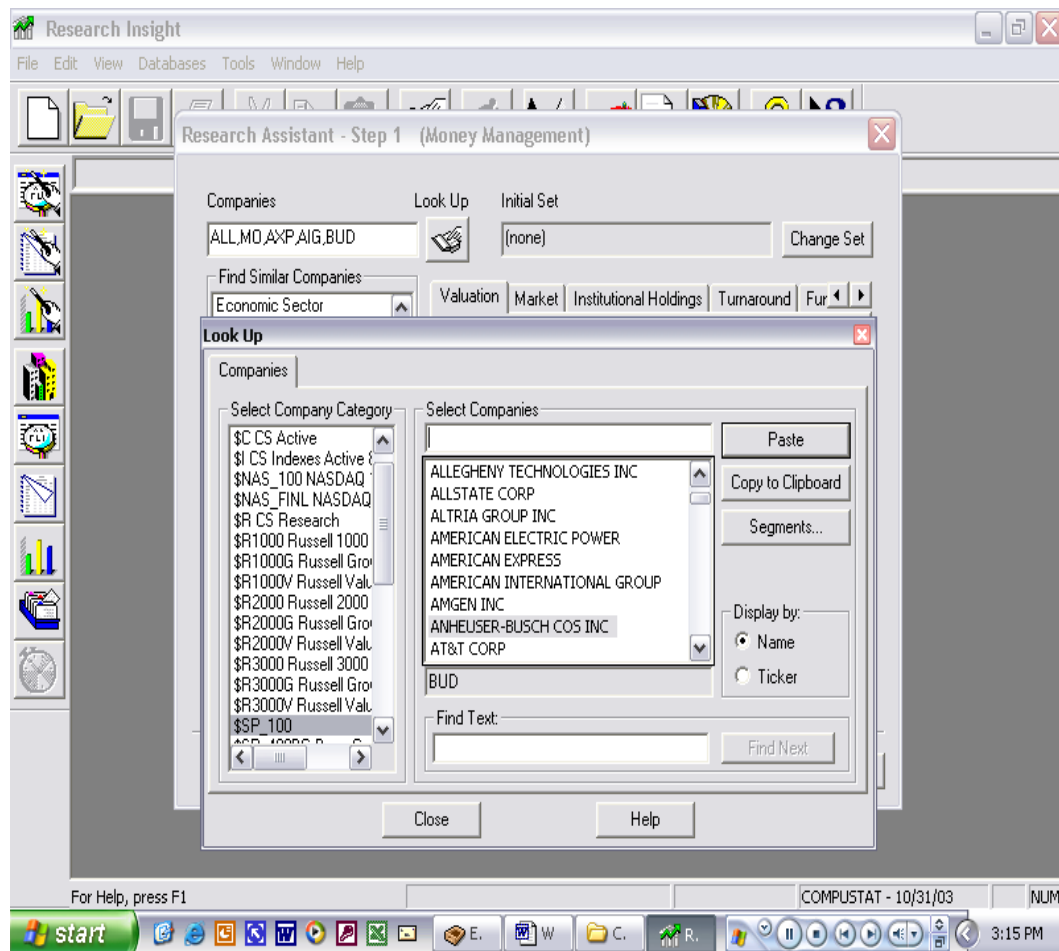
9. The requested data should appear on your screen as shown {if a window pops up before the data just Click **Close** button on the bottom of the window}. Go the **File** at the top of the screen and you can either **Print** the data or **Save** the data (you can save in text form and Import it into Excel).

Company Name	Market Value-Mnthly	Earnings - Monthly	Cash Flow-Share	Price to Book	Beta
ADC TELECOMMUNICATIONS INC	2,068.488	@NM	-5.168	3.350	2.022
ADOBE SYSTEMS INC.	10,240.365	45.583	36.951	11.855	1.601
ALTERA CORP	7,755.478	56.333	42.957	6.626	2.427
AMAZON.COM INC	21,830.512	@NM	481.582	-18.851	2.622
AMERICAN PWR CNVRSION	4,002.466	27.795	21.935	2.885	1.791
AMGEN INC	79,718.633	36.762	28.142	4.097	0.659
APOLLO GROUP INC -CL A	11,130.661	48.846	39.102	10.839	0.043
APPLE COMPUTER INC	8,297.647	120.474	43.270	1.965	1.743
APPLIED MATERIALS INC	38,801.125	@NM	103.021	4.933	2.424
BEA SYSTEMS INC	5,608.066	49.643	34.877	6.796	2.562

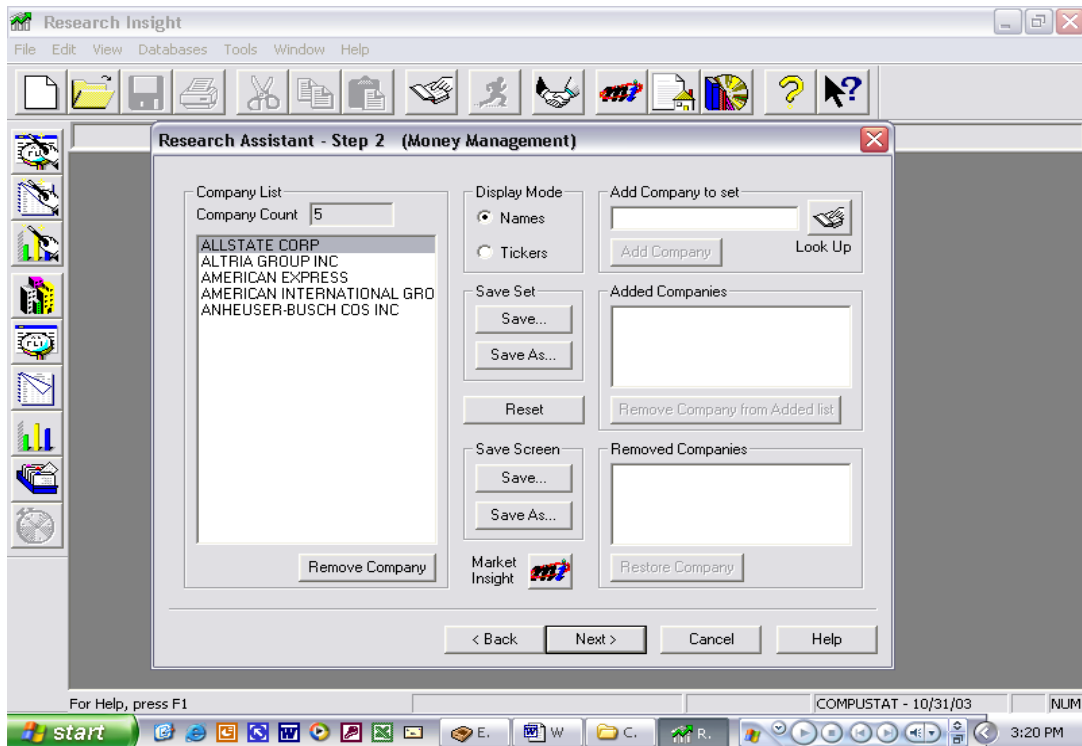
Exercise 3: Finding time series data on several variables for a sample of companies.

This time let's assume I am interested in getting data for the 5 firms from the list of top 100 S&P 100 firms for the last 5 five years.

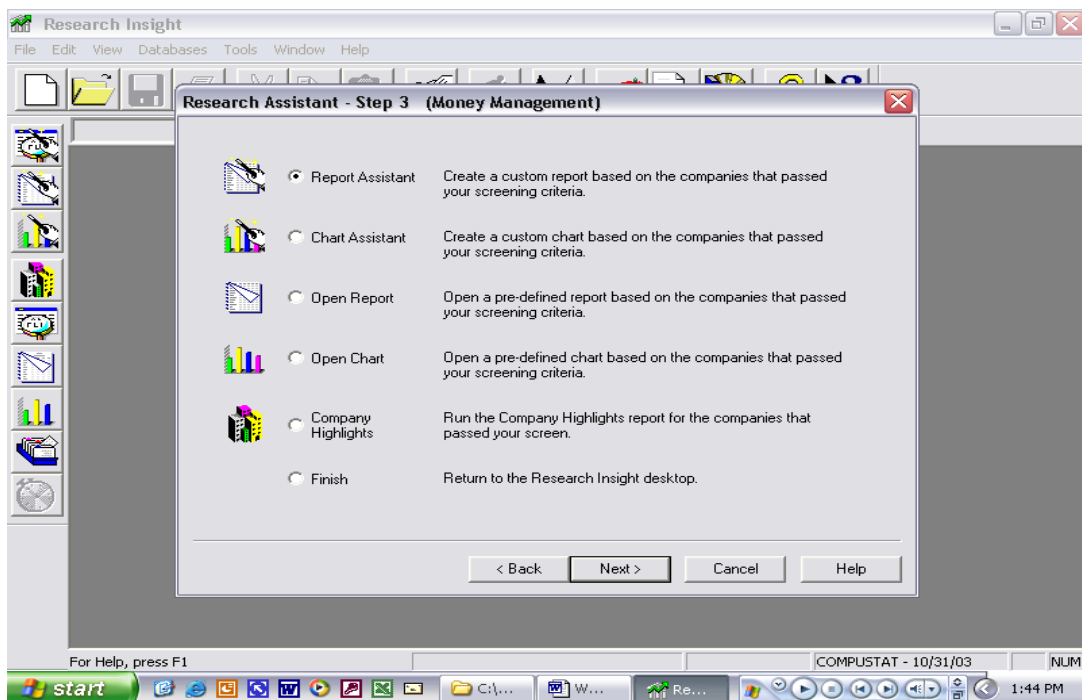
1. Repeat Step 1 (as we did in Exercise 1).
2. Repeat Step 2 (as we did in Exercise 1).
3. Click on **\$SP_100** on **Select Company Category** box. You will get a listing of the top 100 S&P 100 companies in the **Select Company** box. You can choose any of the five companies you are interested in, by choosing/highlighting the company and clicking the **Paste** button (alternatively, you can accomplish the same by double clicking the company you are interested). The following screen shows that I have added five companies. After you are done adding the companies you want, click the **Close** button at the bottom of the current window. Now click **Next>** button on the bottom of the remaining window screen.



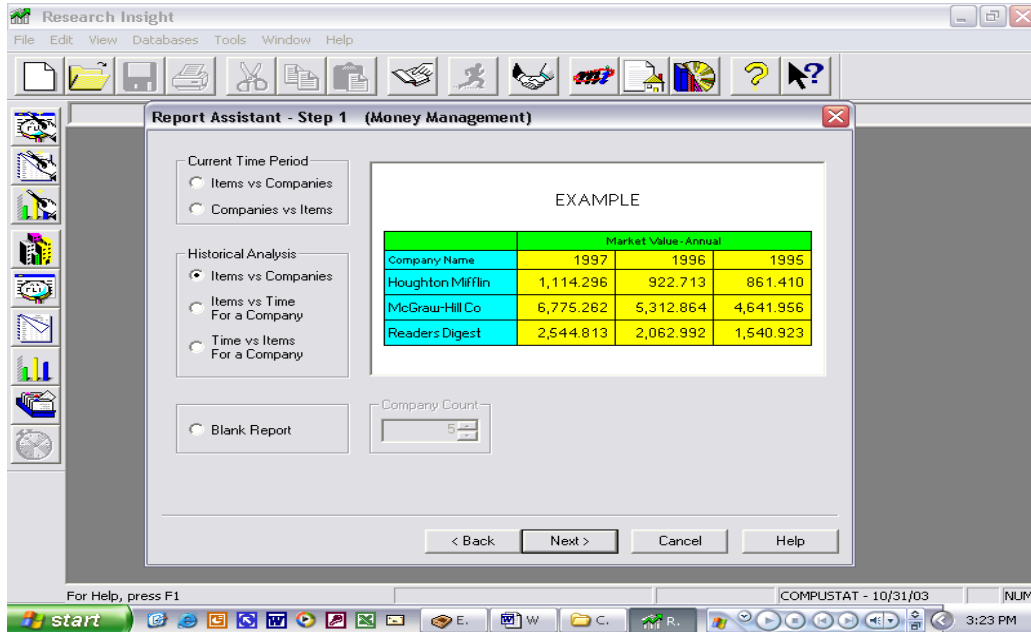
4. The following screen will appear with the names of the companies you have chosen. Click **Next>** button on the bottom of the window.



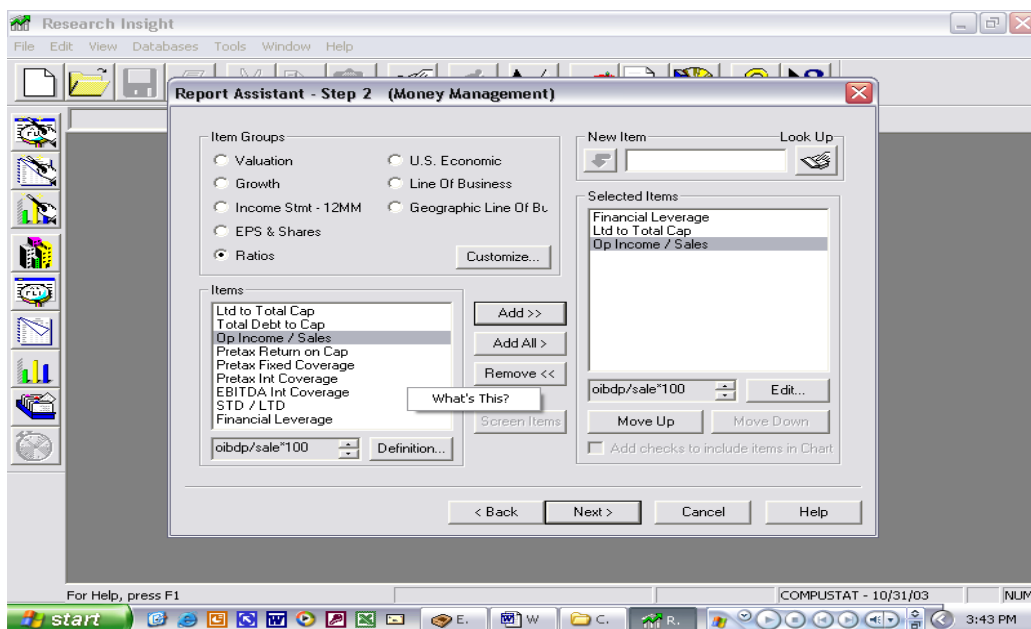
5. The following screen will appear. Choose **Report Assistant** and Click **Next>** button on the bottom of the window.



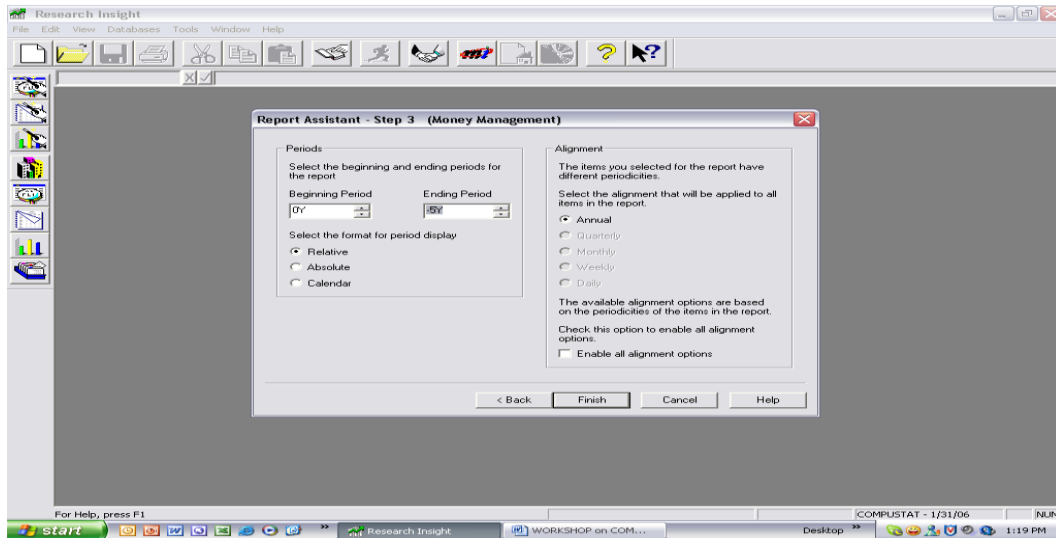
6. The following screen will appear. Choose **Items vs. Companies** (under **Historical Analysis** -- as we need historical numbers) and Click **Next>** button on the bottom of the window.



7. The following screen will appear. Choose one of the **Item Groups** and **Add** as many **Items** you want by using the add button [In this example I have chosen Ratios and have added the 3 items]. Click **Next>** button on the bottom of the window.



8. The following screen will appear. Choose **Relative** and under *Ending Period* Choose **-5Y** [as we need data for the last five years]. Click **Finish** button on the bottom of the window.



9. The requested data should appear on your screen as shown {if a window pops up before the data just Click **Close** button on the bottom of the window}. *Note: you will have to scroll right of the screen to see the complete data.* Go the **File** at the top of the screen and you can either **Print** the data or **Save** the data (you can save in text form and Import it into Excel).

