

Division of Disability Resources
& Educational Services (DRES)
at the University of Illinois and
University Laboratory High
School

DRES History and Background

- DRES is the University of Illinois at Urbana-Champaign disability services office
- DRES has been a member of ISPIC since 2003 and has partnered with several school districts and special education cooperatives to train one to two interns annually. We currently have ISPIC alumni on staff!
- It provides services and accommodations to almost 3000 undergraduate and graduate students with learning disabilities, physical disabilities, ADHD, acquired brain injury, psychiatric disabilities, autism spectrum disorders, and chronic health conditions
- Students registered at DRES are diverse in terms of race, ethnicity, sexual orientation and gender expression, culture, and country of origin
 - 33.5% of DRES students are from underrepresented groups
 - Over 74% of students registered with DRES have non-visible disabilities
- DRES began providing services to students with disabilities in 1948 and was the first postsecondary institution in the world to provide such accommodations

Uni High History and Background

- Uni High is a selective admission, public laboratory school sanctioned by the State of Illinois and associated with the University of Illinois at Urbana-Champaign
- Uni has been serving academically talented students from the sub-freshman to senior level since 1921
- The approximately 300 students at Uni develop strong critical, analytical, and writing skills through a comprehensive curriculum
- Uni boasts a strong team of faculty across many disciplines, and provides the student body with ideal support and community
- Uni High is noted for alumni achievements, including three Nobel laureates and a Pulitzer Prize winner
- In 2006 and 2007, Uni was recognized as a “public elite” school by Newsweek based off exceptional student scores on the SAT

Intern Typical Training Schedule

- During the academic school year, interns spend two days a week at DRES and three days a week at Uni High
- The elementary school rotation typically takes place in winter
- During the summer, interns typically work full time at DRES

DRES Typical Week of Training

- 2 hours of individual formal supervision by a licensed clinical psychologist (informal supervision available throughout the week)
- 1-2 hours of group supervision with a didactic component
- 2-4 hours of assessment
- 2 hours of diagnostic interviewing or providing assessment feedback
- 2-3 hours of progress note and report writing
- 5 hours of individual or group psychotherapy

Uni High Typical Week of Training

- Uni High provides a unique opportunity for interns to learn and specialize in activities related to academically gifted students
- In addition to supporting Uni's Student Services Office (by supporting counselors, Uni students, family, faculty, and administration) our INTERN will:
 - serve on the Uni High crisis team
 - provide individual student and group counseling
 - provide comprehensive psychological evaluations as needed (e.g., ADHD, dyslexia)
 - provide 504/IEP supports to students and faculty
 - set up individual parent consultations to address learning, child development, mental health, and parenting concerns
 - hold monthly public engagement parent workshops * (applying neuroscience and psychology to promote successful child development from high school to college)
 - collect schoolwide data on student mental health and resiliency to inform programming - following UIUC consent policies

Supervision

- At DRES, interns participate in weekly group supervision
- At DRES, interns receive individual supervision of clinical activities by a dually credentialed licensed clinical psychologist and nationally certified school psychologist
- School-based services are supervised by the primary DRES supervisor
- Across all sites, there is ample opportunity for ongoing consultation, collaboration, and peer supervision

DRES Supervisors

Hollie McClintick, Ph.D., NCSP (Primary Supervisor)



- Ph.D., School Psychology, University of Iowa, 2012
- Licensed Psychologist
- Nationally Certified School Psychologist
- ISPIC Alum (Maine East HS, 2011-2012)

Teresa Davenport, Ph.D.



- Ph.D., School Psychology, Ball State University, 2011
- Licensed Psychologist and School Psychologist
- ISPIC Alum (DRES and RCCSEC, 2010-2011)

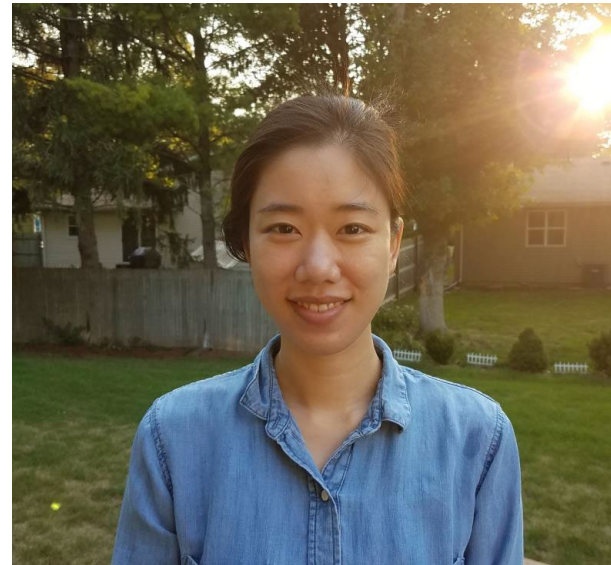
Additional DRES Licensed Psychologists

Kim Collins, Ph.D., CRC



- Interim Director of DRES
- Ph.D., Counseling Psychology, University of Illinois, 1995
- Licensed Psychologist
- Certified Rehabilitation Counselor
- Specialization in Neuropsychology

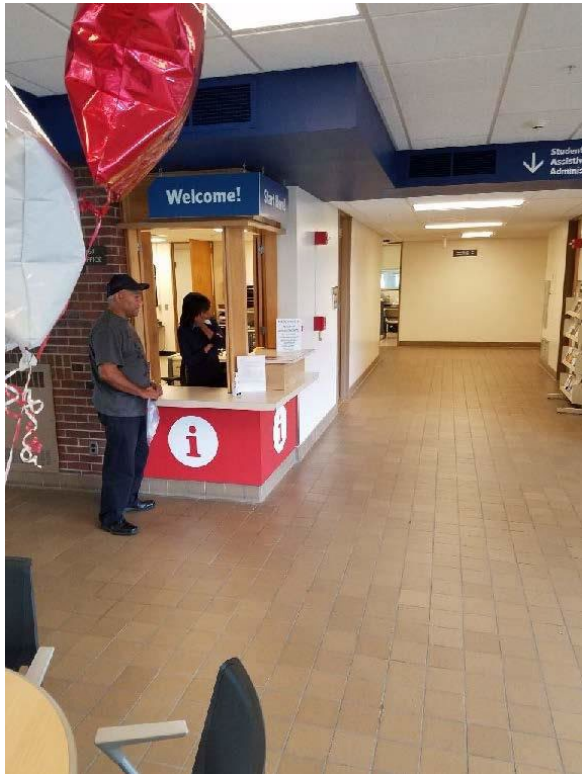
Sue Han, PsyD



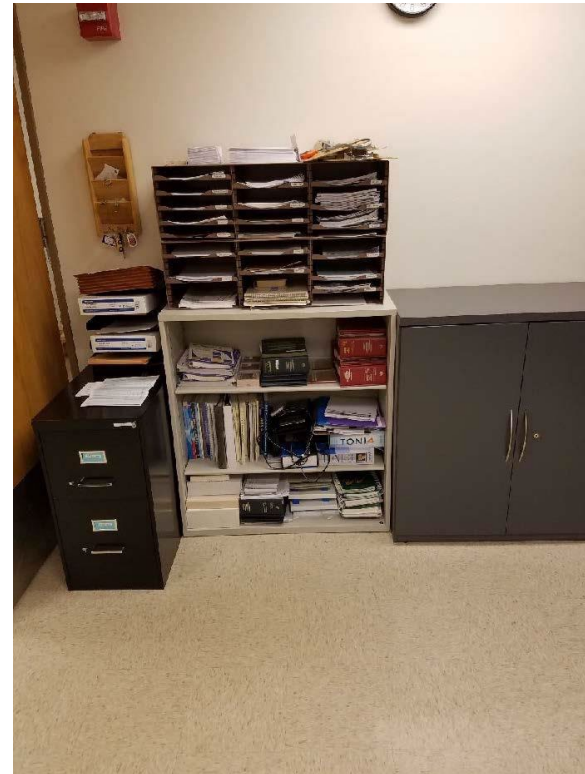
- Assistant Director of Mental Health Services
- PsyD, Clinical Psychology, George Fox University, 2017
- Licensed Psychologist
- Specialization in psychological assessment

DRES Facilities

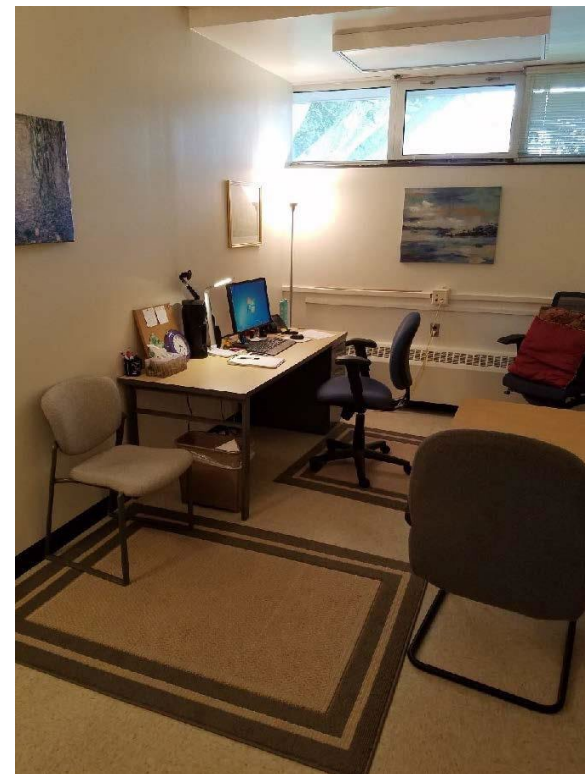
Main Office and Clerical Access to Assessment Support



Access to Assessment Materials



Intern Office Space with Computer



Uni High Staff

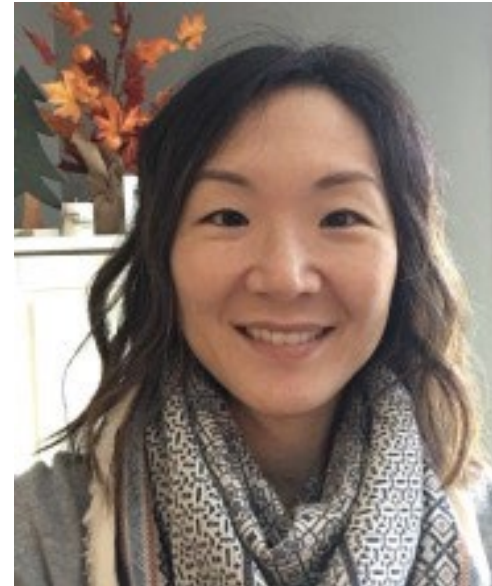
Lisa R. Micele
Director of College Counseling



Kristi Deedrick, LSW
School Counselor



Kristi Deedrick, LSW
School Counselor



Uni High Student Services

Student Services Office



Qualities for our Uni High Intern

- **Self-Starter** – bringing ideas and “passion areas” to the table – offering ideas / suggestions for programming & student / teacher connections and making plans for implementation / delivery
- **Energetic and Eager** - to connect with students, parents and teachers / staff
- Gifted in the art of **small talk** / conversation with our students (etc.)
- **Proactive** – in communicating to students / parents / faculty
- **Communicative**—touching base with counselors and providing updates about how things are going with students; following up on referrals to help close the gap
- **Knowledgeable** - bringing resources and ideas (to give to families / address student concerns)
- **Creative**—willing to think outside of the box to come up with solutions for students and help us in student programming.
- **Flexible** – knowing that a day can look different – at any time
- A **Team Player** – by serving on lunch duty; helping with schoolwide tasks (if at Uni: holiday parties; fire drills; active shooter drill; etc.)
- **Engaged** with students – as connections will built trust (which will lead to them seeking help /reaching out to our intern)
- An Active **Listener / Learner** – reaching out to teachers too (to inquire about how they need help; assistance; consultation)
- **Somewhat Silly** – willing to have fun with the students; staff; our department 😊
- Attend weekly **Student Concerns Meeting**
- Attend **Faculty Meetings** / presenting in partnership with school counselors
- Complete all required **Online**

Thank you!

We hope you enjoyed learning more about our sites. Questions about the DRES/Uni High location can be directed to Dr. Hollie McClintick at hmcclint@Illinois.edu.